

\$539,500 - 167 Caledon Crescent, Spruce Grove

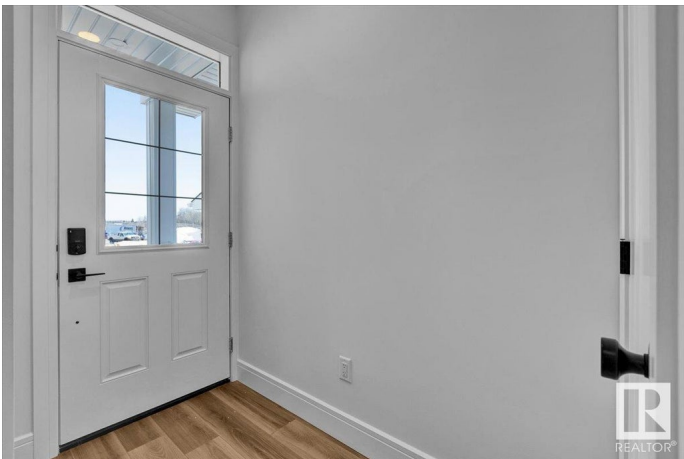
MLS® #E4450647

\$539,500

3 Bedroom, 2.50 Bathroom, 1,867 sqft
Single Family on 0.00 Acres

Copperhaven, Spruce Grove, AB

5 Things to Love About This Home: 1) Spacious Main Floor Living – Enjoy an open-concept layout featuring a modern kitchen with a large island & breakfast bar, a walk-in pantry, and a cozy electric fireplace in the living room. 2) Luxurious Primary Retreat – Relax in your private 5-piece ensuite with dual sinks, a soaker tub, stand-up shower, and a walk-in closet. 3) Smart Layout – The upper floor boasts a bright bonus room, convenient laundry, and two additional spacious bedrooms with a shared 4-piece bath. 4) Private Side Entrance – A separate entry offers added convenience. 5) Prime Location – Nestled in family-friendly Copperhaven, close to schools, parks, playgrounds, and everyday amenities. *Photos are representative.*



Built in 2025

Essential Information

MLS® #	E4450647
Price	\$539,500
Bedrooms	3
Bathrooms	2.50
Full Baths	2
Half Baths	1
Square Footage	1,867
Acres	0.00

Year Built	2025
Type	Single Family
Sub-Type	Detached Single Family
Style	2 Storey
Status	Active

Community Information

Address	167 Caledon Crescent
Area	Spruce Grove
Subdivision	Copperhaven
City	Spruce Grove
County	ALBERTA
Province	AB
Postal Code	T7X 0Y8

Amenities

Amenities	Ceiling 9 ft., Closet Organizers, Detectors Smoke, No Animal Home, No Smoking Home, Smart/Program. Thermostat, Vinyl Windows
Parking	Double Garage Attached

Interior

Interior Features	ensuite bathroom
Appliances	Dishwasher-Built-In, Microwave Hood Fan, Refrigerator, Stove-Electric
Heating	Forced Air-1, Natural Gas
Fireplace	Yes
Fireplaces	Insert
Stories	2
Has Basement	Yes
Basement	Full, Unfinished

Exterior

Exterior	Wood, Vinyl
Exterior Features	Park/Reserve, Playground Nearby, Schools, Shopping Nearby
Roof	Asphalt Shingles
Construction	Wood, Vinyl
Foundation	Concrete Perimeter

Additional Information

Date Listed	July 31st, 2025
-------------	-----------------

Days on Market 10

Zoning Zone 91

DATA IS DEEMED RELIABLE BUT IS NOT GUARANTEED ACCURATE BY THE REALTORS® ASSOCIATION OF EDMONTON. COPYRIGHT 2025 BY THE REALTORS® ASSOCIATION OF EDMONTON. ALL RIGHTS RESERVED. Trademarks are owned or controlled by the Canadian Real Estate Association (CREA) and identify real estate professionals who are members of CREA (REALTOR®, REALTORS®) and/or the quality of services they provide (MLS®, Multiple Listing Service®)

Listing information last updated on August 10th, 2025 at 3:32pm MDT