

\$545,000 - 85 Lamplight Drive, Spruce Grove

MLS® #E4448723

\$545,000

3 Bedroom, 2.50 Bathroom, 1,985 sqft

Single Family on 0.00 Acres

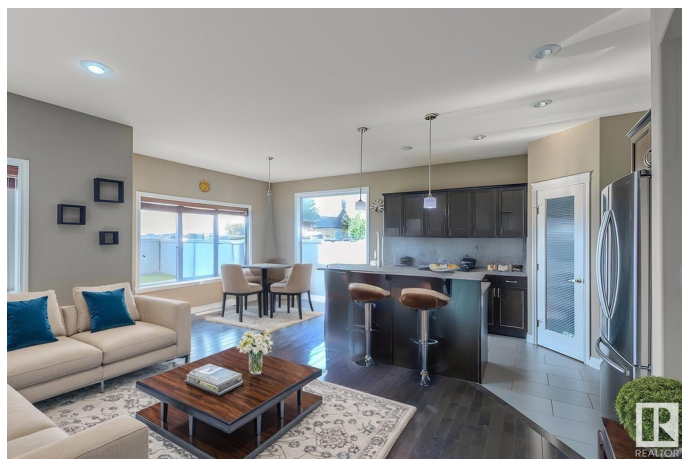
Legacy Park, Spruce Grove, AB

Welcome to your new home in Legacy Park! This 3-bedroom 3 bath home awaits its new family! Featuring a large spacious kitchen, dining room and living room area, in an open concept. This area is complemented with hardwood floors, granite counter tops, stainless steel appliances and gas fireplace. With a west facing backyard, there is ample natural light throughout the home. Along with 3 bedrooms, the upstairs also provides the bonus room, perfect for entertaining or settling in for movie night on the big screen TV. The master suite is the thoughtfully designed, offering a 5 piece en-suite with 2 bathroom sinks! The basement is unfinished and is ready for your favorite design and touches. The backyard is fenced with a deck and backs onto a field, providing extra privacy. Conveniently located to the Tri-Leisure recreation complex/sports field, and also has quick access to Hi-Way 16 & 16A.

Built in 2012

Essential Information

MLS® #	E4448723
Price	\$545,000
Bedrooms	3
Bathrooms	2.50
Full Baths	2



Half Baths	1
Square Footage	1,985
Acres	0.00
Year Built	2012
Type	Single Family
Sub-Type	Detached Single Family
Style	2 Storey
Status	Active

Community Information

Address	85 Lamplight Drive
Area	Spruce Grove
Subdivision	Legacy Park
City	Spruce Grove
County	ALBERTA
Province	AB
Postal Code	T7X 0G8

Amenities

Amenities	Air Conditioner, Deck, Detectors Smoke, No Animal Home, No Smoking Home
Parking Spaces	4
Parking	Double Garage Attached

Interior

Interior Features	ensuite bathroom
Appliances	Air Conditioning-Central, Dishwasher-Built-In, Dryer, Garage Control, Garage Opener, Hood Fan, Refrigerator, Stove-Gas, Washer, Window Coverings
Heating	Forced Air-1, Natural Gas
Fireplace	Yes
Fireplaces	Glass Door, Three Sided
Stories	2
Has Basement	Yes
Basement	Full, Unfinished

Exterior

Exterior	Wood, Vinyl
Exterior Features	Backs Onto Park/Trees, Fenced, Flat Site, Landscaped, Public

	Transportation, Shopping Nearby
Roof	Asphalt Shingles
Construction	Wood, Vinyl
Foundation	Concrete Perimeter

Additional Information

Date Listed	July 18th, 2025
Days on Market	8
Zoning	Zone 91

DATA IS DEEMED RELIABLE BUT IS NOT GUARANTEED ACCURATE BY THE REALTORS® ASSOCIATION OF EDMONTON. COPYRIGHT 2025 BY THE REALTORS® ASSOCIATION OF EDMONTON. ALL RIGHTS RESERVED. Trademarks are owned or controlled by the Canadian Real Estate Association (CREA) and identify real estate professionals who are members of CREA (REALTOR®, REALTORS®) and/or the quality of services they provide (MLS®, Multiple Listing Service®)

Listing information last updated on July 26th, 2025 at 10:47am MDT