

\$649,900 - 401 30 St Joseph Street, St. Albert

MLS® #E4446572

\$649,900

2 Bedroom, 2.00 Bathroom, 1,302 sqft
Condo / Townhouse on 0.00 Acres

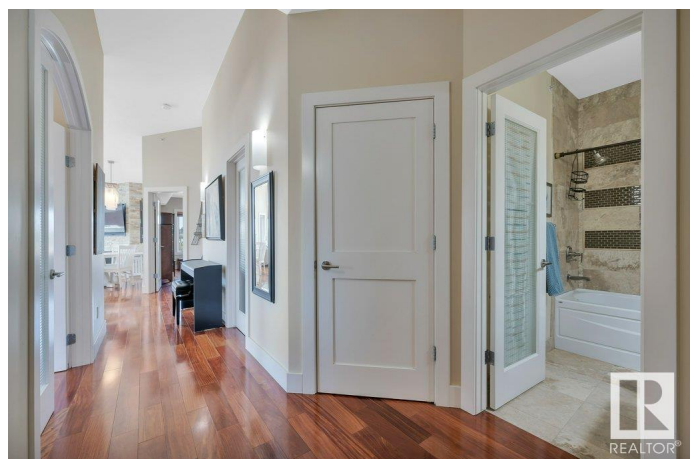
Downtown (St. Albert), St. Albert, AB

Spectacular 1301 sq. ft. executive penthouse condo in the heart of St. Albert in the prestigious Versailles building. This one-of-a-kind 2-bdrm home features soaring 20-ft coved ceilings in the great room, rich mahogany hardwood and limestone flooring thru out, a Tindlestone gas fireplace with TV niche, and oversized windows showcasing panoramic views. The chef's kitchen boasts granite countertops, stainless steel appliances, a huge island, walk-in pantry, and garden door to a spacious balcony. The luxurious primary suite offers a stunning 3-piece ensuite with walk-in shower and a large walk-in closet. A cozy bedroom/den includes a Murphy bed and double closets with sliding doors to the patio. Additional features include in-floor heating, air conditioning, a laundry room with built-in shelving and sink, and a second 4-piece bath. Enjoy 2 underground heated parking stalls, a spacious storage unit, and unbeatable access to shopping, fine dining, the Farmers Market, Arden Theatre, and the beautiful River Valley

Built in 2004

Essential Information

MLS® #	E4446572
Price	\$649,900



Bedrooms	2
Bathrooms	2.00
Full Baths	2
Square Footage	1,302
Acres	0.00
Year Built	2004
Type	Condo / Townhouse
Sub-Type	Lowrise Apartment
Style	Single Level Apartment
Status	Active

Community Information

Address	401 30 St Joseph Street
Area	St. Albert
Subdivision	Downtown (St. Albert)
City	St. Albert
County	ALBERTA
Province	AB
Postal Code	T8N 7C9

Amenities

Amenities	Air Conditioner, Deck, Guest Suite, No Smoking Home, Parking-Visitor, Secured Parking, Security Door, Vaulted Ceiling, See Remarks, Storage Cage
Parking	Heated, Insulated, Underground

Interior

Interior Features	ensuite bathroom
Appliances	Dishwasher-Built-In, Dryer, Hood Fan, Oven-Microwave, Refrigerator, Stove-Gas, Washer, Window Coverings
Heating	In Floor Heat System, Natural Gas
Fireplace	Yes
Fireplaces	Stone Facing
# of Stories	4
Stories	4
Has Basement	Yes
Basement	None, No Basement

Exterior

Exterior	Wood, Brick, Metal, Stucco
Exterior Features	Golf Nearby, Landscaped, Park/Reserve, Playground Nearby, Schools, Shopping Nearby, View City, View Downtown
Roof	Metal
Construction	Wood, Brick, Metal, Stucco
Foundation	Concrete Perimeter

Additional Information

Date Listed	July 8th, 2025
Days on Market	14
Zoning	Zone 24
Condo Fee	\$766

DATA IS DEEMED RELIABLE BUT IS NOT GUARANTEED ACCURATE BY THE REALTORS® ASSOCIATION OF EDMONTON. COPYRIGHT 2025 BY THE REALTORS® ASSOCIATION OF EDMONTON. ALL RIGHTS RESERVED. Trademarks are owned or controlled by the Canadian Real Estate Association (CREA) and identify real estate professionals who are members of CREA (REALTOR®, REALTORS®) and/or the quality of services they provide (MLS®, Multiple Listing Service®)

Listing information last updated on July 22nd, 2025 at 5:32am MDT