

\$649,000 - 23 Granville Crescent, Sherwood Park

MLS® #E4440581

\$649,000

6 Bedroom, 3.00 Bathroom, 1,354 sqft

Single Family on 0.00 Acres

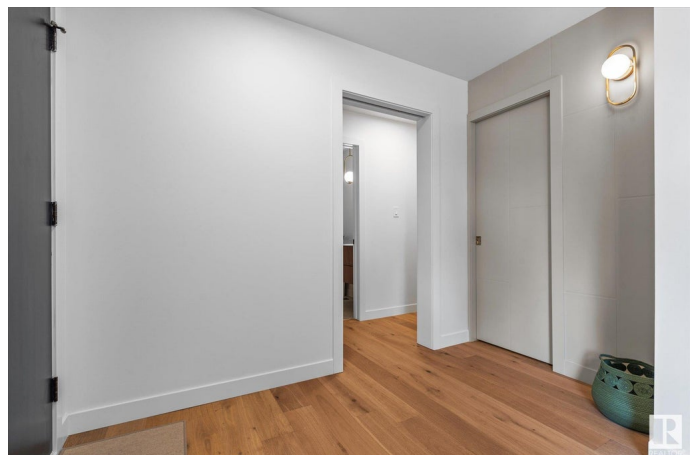
Glen Allan, Sherwood Park, AB

This fully updated 6-bedroom, 3-bath home blends midcentury charm with timeless style, featuring a fluted island, quartz countertops with full slab backsplash, gas range, engineered hardwood floors, and stainless steel appliances. The bright and timeless main floor includes a custom built-in fireplace, while the basementâ€™with a separate entranceâ€™offers soundproofing, plush carpeting and 3 more large bedrooms, a full bath, an electric fireplace, a spacious wet bar, and a massive walk-in pantry/storage area. The luxurious primary suite boasts a wet-room with a walk-in shower and separate tub. Additional upgrades include new windows, updated plumbing and electrical, newer furnace, new hot water tank, laundry on both levels, and an oversized double garage. Located in a quiet, mature neighborhood close to schools and shopping, this home is ideal for families or investors looking for move-in-ready value.

Built in 1972

Essential Information

| | |
|-----------|-----------|
| MLS® # | E4440581 |
| Price | \$649,000 |
| Bedrooms | 6 |
| Bathrooms | 3.00 |



| | |
|----------------|------------------------|
| Full Baths | 3 |
| Square Footage | 1,354 |
| Acres | 0.00 |
| Year Built | 1972 |
| Type | Single Family |
| Sub-Type | Detached Single Family |
| Style | Bungalow |
| Status | Active |

Community Information

| | |
|-------------|-----------------------|
| Address | 23 Granville Crescent |
| Area | Sherwood Park |
| Subdivision | Glen Allan |
| City | Sherwood Park |
| County | ALBERTA |
| Province | AB |
| Postal Code | T8B 0B1 |

Amenities

| | |
|-----------|---------------------------------------------------------------------------------------------|
| Amenities | Carbon Monoxide Detectors, Detectors Smoke, Hot Water Natural Gas, No Smoking Home, Wet Bar |
| Parking | Double Garage Detached, Front Drive Access |

Interior

| | |
|-------------------|--------------------------------------------------------|
| Interior Features | ensuite bathroom |
| Appliances | Hood Fan, Stove-Gas, Refrigerators-Two, Dishwasher-Two |
| Heating | Forced Air-1, Natural Gas |
| Fireplace | Yes |
| Fireplaces | Glass Door |
| Stories | 2 |
| Has Basement | Yes |
| Basement | Full, Finished |

Exterior

| | |
|-------------------|--------------------------------------------------------------------------------------------------------------------|
| Exterior | Wood, Brick, Stucco, Vinyl |
| Exterior Features | Landscaped, Low Maintenance Landscape, No Back Lane, Playground Nearby, Schools, Shopping Nearby, Partially Fenced |
| Roof | Asphalt Shingles |
| Construction | Wood, Brick, Stucco, Vinyl |

Foundation Concrete Perimeter

School Information

Elementary Glen Allen Elementary

Additional Information

Date Listed June 5th, 2025

Days on Market 11

Zoning Zone 25

DATA IS DEEMED RELIABLE BUT IS NOT GUARANTEED ACCURATE BY THE REALTORS® ASSOCIATION OF EDMONTON. COPYRIGHT 2025 BY THE REALTORS® ASSOCIATION OF EDMONTON. ALL RIGHTS RESERVED.Trademarks are owned or controlled by the Canadian Real Estate Association (CREA) and identify real estate professionals who are members of CREA (REALTOR®, REALTORS®) and/or the quality of services they provide (MLS®, Multiple Listing Service®)

Listing information last updated on June 16th, 2025 at 8:32pm MDT