

## \$225,000 - 125 Parkside Drive, Wetaskiwin

MLS® #E4437634

**\$225,000**

3 Bedroom, 1.50 Bathroom, 1,028 sqft

Single Family on 0.00 Acres

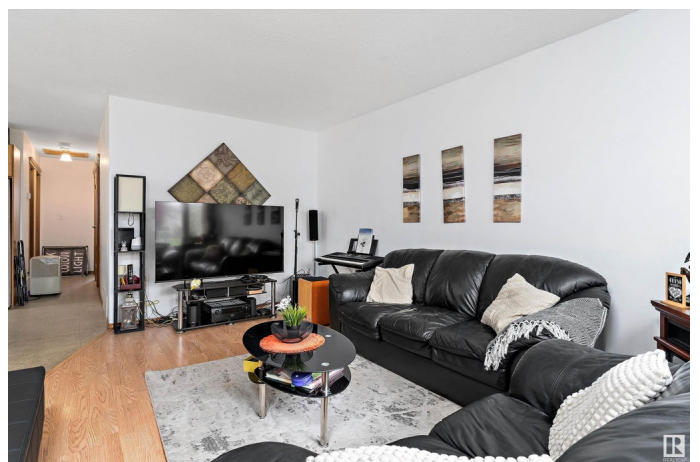
Parkside, Wetaskiwin, AB

A GREAT INVESTMENT OPPORTUNITY or the perfect fit for a FIRST-TIME HOME BUYER or someone looking to DOWNSIZE! This 1,028 SQ FT HALF DUPLEX BUNGALOW in desirable PARKSIDE features 3 BEDROOMS and 1.1 BATHROOMS, including a 4 PC MAIN BATH and 2 PC ENSUITE. The spacious KITCHEN offers LOADS OF STORAGE and comes with THREE APPLIANCES, plus a FUNCTIONAL DINING ROOM ideal for everyday living. MAIN FLOOR LAUNDRY HOOK-UPS and additional HOOK-UPS IN THE BASEMENT add convenience. The FULL BASEMENT is a BLANK CANVAS, ready for your ideas. A SINGLE ATTACHED GARAGE adds to the appeal. Located within WALKING DISTANCE to NORWOOD SCHOOL, SACRED HEART SCHOOL, and the MANLUK REC CENTRE, this home checks all the boxes!

Built in 1994

### Essential Information

MLS® #	E4437634
Price	\$225,000
Bedrooms	3
Bathrooms	1.50
Full Baths	1
Half Baths	1



Square Footage	1,028
Acres	0.00
Year Built	1994
Type	Single Family
Sub-Type	Half Duplex
Style	Bungalow
Status	Active

### Community Information

Address	125 Parkside Drive
Area	Wetaskiwin
Subdivision	Parkside
City	Wetaskiwin
County	ALBERTA
Province	AB
Postal Code	T9A 3H1

### Amenities

Amenities	Hot Water Natural Gas, No Smoking Home
Parking	Single Garage Attached

### Interior

Interior Features	ensuite bathroom
Appliances	Dishwasher-Built-In, Garage Control, Refrigerator, Stove-Electric
Heating	Forced Air-1, Natural Gas
Stories	1
Has Basement	Yes
Basement	Full, Unfinished

### Exterior

Exterior	Wood, Stucco
Exterior Features	Back Lane, Landscaped, Not Fenced, Playground Nearby, Schools, Shopping Nearby
Roof	Asphalt Shingles
Construction	Wood, Stucco
Foundation	Concrete Perimeter

### School Information

Elementary	Norwood School
------------	----------------

Middle	Sacred Heart Catholic
High	Wetaskiwin Composite

**Additional Information**

Date Listed	May 21st, 2025
Days on Market	16
Zoning	Zone 80

DATA IS DEEMED RELIABLE BUT IS NOT GUARANTEED ACCURATE BY THE REALTORS® ASSOCIATION OF EDMONTON. COPYRIGHT 2025 BY THE REALTORS® ASSOCIATION OF EDMONTON. ALL RIGHTS RESERVED.Trademarks are owned or controlled by the Canadian Real Estate Association (CREA) and identify real estate professionals who are members of CREA (REALTOR®, REALTORS®) and/or the quality of services they provide (MLS®, Multiple Listing Service®)

Listing information last updated on June 6th, 2025 at 12:47pm MDT