

\$589,900 - 6965 Strom Lane, Edmonton

MLS® #E4437126

\$589,900

4 Bedroom, 3.50 Bathroom, 2,137 sqft

Single Family on 0.00 Acres

South Terwillegar, Edmonton, AB

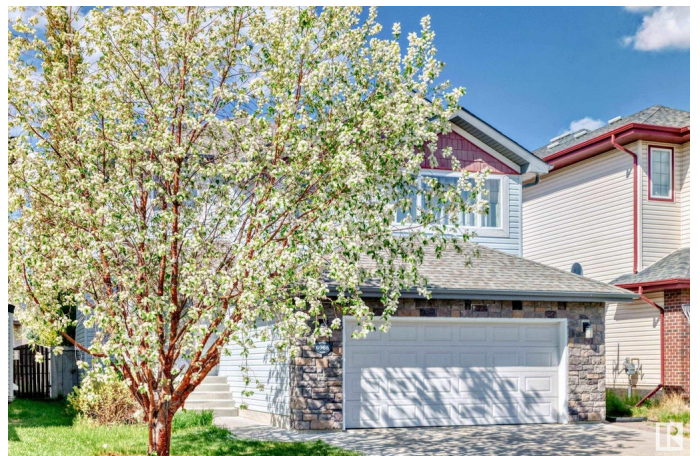
PERFECT FAMILY HOUSE! Before anything, this house offers a great location just off Rabbit Hill Road with easy access to all amenities along 23 ave as well as easy access to ANTHONY HENDAY. Nestled just inside this quiet neighborhood of SOUTH TERWILLEGAR, this 2137 square foot gem is FULLY DEVELOPED. The basement is complete with a family room, bathroom, additional bedroom, and utility/storage. The main level boasts and OPEN FLOOR PLAN with the BEAUTIFUL KITCHEN opening up to the living room. High-end CERAMIC TILE flooring that looks like exquisite hardwood. BIG WINDOWS and PATIO DOORS that allow for a lot of natural sunlight. FIREPLACE located on main floor as well as basement. Top floor is fully carpeted and features 3 BEDROOMS, 2 FULL BATHROOMS (One ensuite), and LARGE BONUS ROOM. Backyard is large and features a deck with plenty of space for a barbeque and patio furniture. Also, this house is VERY CLEAN and has been WELL CARED FOR. Complete PRIDE OF OWNERSHIP shows throughout. DOUBLE ATTACHED GARAGE.

Built in 2007

Essential Information

MLS® #

E4437126



Price	\$589,900
Bedrooms	4
Bathrooms	3.50
Full Baths	3
Half Baths	1
Square Footage	2,137
Acres	0.00
Year Built	2007
Type	Single Family
Sub-Type	Detached Single Family
Style	2 Storey
Status	Active

Community Information

Address	6965 Strom Lane
Area	Edmonton
Subdivision	South Terwillegar
City	Edmonton
County	ALBERTA
Province	AB
Postal Code	T6R 0J9

Amenities

Amenities	Deck
Parking	Double Garage Attached

Interior

Interior Features	ensuite bathroom
Appliances	Dishwasher-Built-In, Dryer, Refrigerator, Stove-Electric, Washer
Heating	Forced Air-1, Natural Gas
Fireplace	Yes
Fireplaces	See Remarks
Stories	3
Has Basement	Yes
Basement	Full, Finished

Exterior

Exterior	Wood, Vinyl
Exterior Features	Landscaped, Schools, Shopping Nearby

Roof	Asphalt Shingles
Construction	Wood, Vinyl
Foundation	Concrete Perimeter

Additional Information

Date Listed	May 16th, 2025
Days on Market	11
Zoning	Zone 14

DATA IS DEEMED RELIABLE BUT IS NOT GUARANTEED ACCURATE BY THE REALTORS® ASSOCIATION OF EDMONTON. COPYRIGHT 2025 BY THE REALTORS® ASSOCIATION OF EDMONTON. ALL RIGHTS RESERVED.Trademarks are owned or controlled by the Canadian Real Estate Association (CREA) and identify real estate professionals who are members of CREA (REALTOR®, REALTORS®) and/or the quality of services they provide (MLS®, Multiple Listing Service®)

Listing information last updated on May 27th, 2025 at 8:47pm MDT