

\$749,800 - 8512 181 Avenue, Edmonton

MLS® #E4436421

\$749,800

5 Bedroom, 3.00 Bathroom, 2,293 sqft

Single Family on 0.00 Acres

Klarvatten, Edmonton, AB

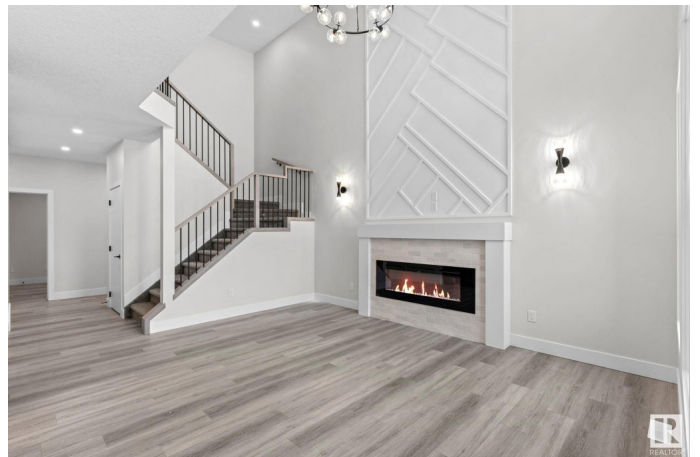
Welcome to this stunning New Era built home featuring a walkout basement that backs onto a peaceful dry pond. The main floor is designed to impress with a soaring open-to-above great room, a spacious mudroom, a main-floor bedroom, a full bath, and a functional spice kitchen—perfect for families or entertaining. Upstairs offers four bedrooms, including a luxurious primary suite with a spa-like 5-piece ensuite, along with a large bonus room enhanced by an elegant tray ceiling. Premium features throughout include a tankless hot water system, BBQ gas line, triple-pane windows, garage floor drain, 9-foot ceilings on both the main floor and basement, built-in MDF shelving, ceiling-height kitchen cabinets, and quartz countertops. Ideally located just minutes from shopping centers, Kâ€™9 schools, and with quick access to Anthony Henday Drive, this home blends modern luxury, everyday convenience, and exceptional design. Note: photos are from a similar home; exact finishes and colors may vary. UNDER CONSTRUCTION!

Built in 2025

Essential Information

MLS® # E4436421

Price \$749,800



Bedrooms	5
Bathrooms	3.00
Full Baths	3
Square Footage	2,293
Acres	0.00
Year Built	2025
Type	Single Family
Sub-Type	Detached Single Family
Style	2 Storey
Status	Active

Community Information

Address	8512 181 Avenue
Area	Edmonton
Subdivision	Klarvatten
City	Edmonton
County	ALBERTA
Province	AB
Postal Code	T6X 0R7

Amenities

Amenities	Ceiling 9 ft., Hot Water Tankless, No Smoking Home, Walkout Basement, See Remarks, HRV System, 9 ft. Basement Ceiling
Parking	Double Garage Attached
Is Waterfront	Yes

Interior

Interior Features	ensuite bathroom
Appliances	Garage Opener, Hood Fan, Builder Appliance Credit
Heating	Forced Air-1, Natural Gas
Fireplaces	Mantel
Stories	2
Has Basement	Yes
Basement	Full, Unfinished

Exterior

Exterior	Wood, Stone, Vinyl
Exterior Features	Backs Onto Lake, Public Transportation, Schools, Shopping Nearby, See Remarks

Roof	Asphalt Shingles
Construction	Wood, Stone, Vinyl
Foundation	Concrete Perimeter

Additional Information

Date Listed	May 14th, 2025
Days on Market	34
Zoning	Zone 28

DATA IS DEEMED RELIABLE BUT IS NOT GUARANTEED ACCURATE BY THE REALTORS® ASSOCIATION OF EDMONTON. COPYRIGHT 2025 BY THE REALTORS® ASSOCIATION OF EDMONTON. ALL RIGHTS RESERVED.Trademarks are owned or controlled by the Canadian Real Estate Association (CREA) and identify real estate professionals who are members of CREA (REALTOR®, REALTORS®) and/or the quality of services they provide (MLS®, Multiple Listing Service®)

Listing information last updated on June 16th, 2025 at 11:22pm MDT