

\$659,000 - 207 200 Bellerose Drive, St. Albert

MLS® #E4434327

\$659,000

2 Bedroom, 2.00 Bathroom, 1,700 sqft

Condo / Townhouse on 0.00 Acres

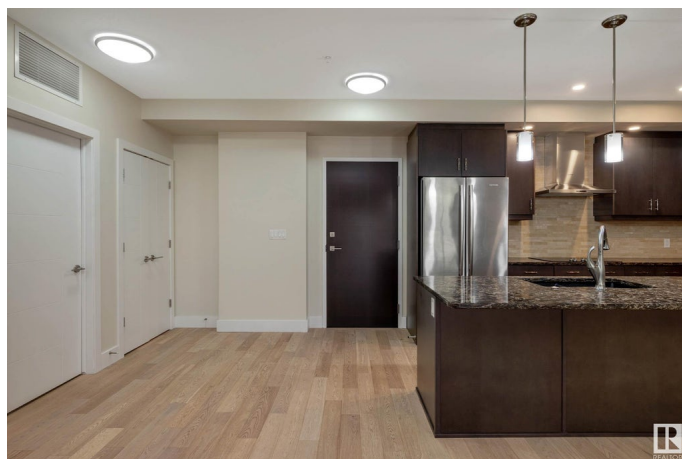
Oakmont, St. Albert, AB

Location Location Location! Gorgeous 2 Bedroom + Den 1700 sq ft executive condo, situated riverside with quiet location away from all traffic. Steel beam building with extra sound proofing and huge windows on bright south side of building, titled heated underground parking on the same level as your suite! No stairs to access! Smoke free building, 6 top of the line appliances, quartz counter-tops, open concept with large central island, fireplace, 2 bathrooms & large den for computer/office. Large entertainment area off the kitchen, plus covered river facing deck with gas outlet for BBQ. Stroll over to high quality restaurants and the "Shops at Boudreau" including Mercato and Italian Market.

Built in 2018

Essential Information

MLS® #	E4434327
Price	\$659,000
Bedrooms	2
Bathrooms	2.00
Full Baths	2
Square Footage	1,700
Acres	0.00
Year Built	2018
Type	Condo / Townhouse



Sub-Type	Apartment High Rise
Style	Single Level Apartment
Status	Active

Community Information

Address	207 200 Bellerose Drive
Area	St. Albert
Subdivision	Oakmont
City	St. Albert
County	ALBERTA
Province	AB
Postal Code	T8N 7P7

Amenities

Amenities	Air Conditioner, Car Wash, Ceiling 9 ft., Deck, Detectors Smoke, No Smoking Home, Parking-Visitor, Party Room, Secured Parking, Social Rooms, Sprinkler System-Fire, Sprinkler Sys-Underground, Vinyl Windows, Storage Cage, Natural Gas BBQ Hookup
Parking	Underground

Interior

Interior Features	ensuite bathroom
Appliances	Air Conditioning-Central, Dishwasher-Built-In, Garage Control, Garage Opener, Hood Fan, Oven-Built-In, Oven-Microwave, Refrigerator, Stacked Washer/Dryer, Stove-Countertop Electric, Window Coverings
Heating	Fan Coil, Electric
Fireplace	Yes
Fireplaces	Tile Surround
# of Stories	9
Stories	1
Has Basement	Yes
Basement	None, No Basement

Exterior

Exterior	Steel, Metal, Stucco
Exterior Features	Backs Onto Park/Trees, Golf Nearby, Hillside, Playground Nearby, Private Fishing, Private Setting, Public Swimming Pool, Public Transportation, River Valley View, River View, Schools, Shopping Nearby, Private Park Access
Roof	EPDM Membrane

Construction	Steel, Metal, Stucco
Foundation	Concrete Perimeter

Additional Information

Date Listed	May 3rd, 2025
Days on Market	86
Zoning	Zone 24
Condo Fee	\$698

DATA IS DEEMED RELIABLE BUT IS NOT GUARANTEED ACCURATE BY THE REALTORS® ASSOCIATION OF EDMONTON. COPYRIGHT 2025 BY THE REALTORS® ASSOCIATION OF EDMONTON. ALL RIGHTS RESERVED.Trademarks are owned or controlled by the Canadian Real Estate Association (CREA) and identify real estate professionals who are members of CREA (REALTOR®, REALTORS®) and/or the quality of services they provide (MLS®, Multiple Listing Service®)

Listing information last updated on July 28th, 2025 at 3:03pm MDT