

## \$720,000 - 667 King Street, Spruce Grove

MLS® #E4431429

**\$720,000**

3 Bedroom, 2.50 Bathroom, 2,390 sqft

Single Family on 0.00 Acres

Hilldowns, Spruce Grove, AB

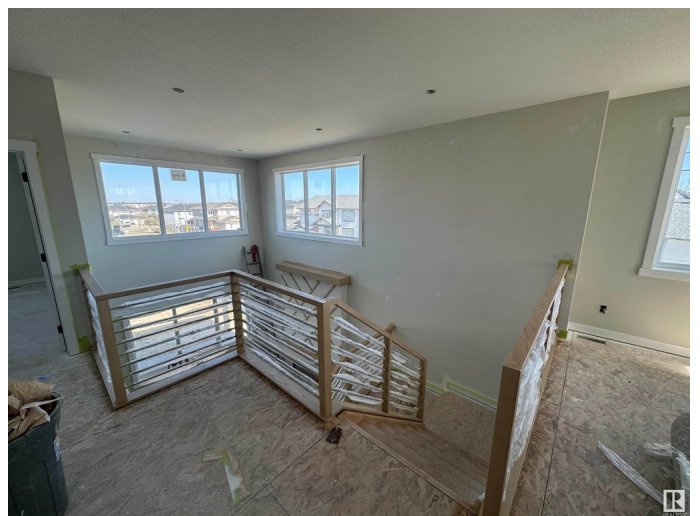
BRAND NEW! Craftsman Home by LCM Construction located in the Hilldowns neighborhood, Spruce Grove! This corner lot, 2 story home offers exceptional curb appeal w/olive vinyl exterior, white window & door trim, tan triple garage doors, with complimentary stone on the front. Main Floor boasts a modern floorplan w/9ft ceilings, vinyl plank flooring, flex/office room, mudroom w/built in bench, 20ft open to below living room w/ feature wall/fireplace, large kitchen w/4ft wide quartz island, walkthrough pantry, SS appliances & modern black fixtures & hardware. Upstairs offers an open bonus room, carpet flooring, laundry room w/quartz countertop, 2 large bedrooms & a spacious primary bedroom w/5 piece ensuite, modern soaker tub, tiled shower, enclosed toilet & walk-in closet. Enjoy entertaining in the spacious backyard w/a covered deck featuring plank style vinyl flooring. Bonus, AC unit, Side door entry, 125 amp electrical service, 9ft ceiling on all floors, w/ 12ft ceiling in garage. Move in ready end of May.

Built in 2024

### Essential Information

MLS® # E4431429

Price \$720,000



Bedrooms	3
Bathrooms	2.50
Full Baths	2
Half Baths	1
Square Footage	2,390
Acres	0.00
Year Built	2024
Type	Single Family
Sub-Type	Detached Single Family
Style	2 Storey
Status	Active

### Community Information

Address	667 King Street
Area	Spruce Grove
Subdivision	Hilldowns
City	Spruce Grove
County	ALBERTA
Province	AB
Postal Code	T7X 4P7

### Amenities

Amenities	Carbon Monoxide Detectors, Ceiling 9 ft., Deck, Detectors Smoke, 9 ft. Basement Ceiling
Parking	Triple Garage Attached

### Interior

Appliances	Air Conditioning-Central, Dishwasher-Built-In, Dryer, Garage Control, Garage Opener, Microwave Hood Fan, Refrigerator, Stove-Electric, Washer, Garage Heater
Heating	Forced Air-1, Natural Gas
Fireplace	Yes
Fireplaces	Mantel
Stories	2
Has Basement	Yes
Basement	Full, Unfinished

### Exterior

Exterior	Wood, Stone, Vinyl
----------	--------------------

Exterior Features	Picnic Area, Playground Nearby, Public Swimming Pool, Public Transportation, Rolling Land, Schools, Shopping Nearby, Stream/Pond
Roof	Asphalt Shingles
Construction	Wood, Stone, Vinyl
Foundation	Concrete Perimeter

**Additional Information**

Date Listed	April 17th, 2025
Days on Market	39
Zoning	Zone 91

DATA IS DEEMED RELIABLE BUT IS NOT GUARANTEED ACCURATE BY THE REALTORS® ASSOCIATION OF EDMONTON. COPYRIGHT 2025 BY THE REALTORS® ASSOCIATION OF EDMONTON. ALL RIGHTS RESERVED.Trademarks are owned or controlled by the Canadian Real Estate Association (CREA) and identify real estate professionals who are members of CREA (REALTOR®, REALTORS®) and/or the quality of services they provide (MLS®, Multiple Listing Service®)

Listing information last updated on May 25th, 2025 at 10:32pm MDT