

Courtesy Of Elizabeth Hickey Of RE/MAX Real Estate

\$559,900 - 115 Shores Drive, Leduc

MLS® #E4428375

\$559,900

3 Bedroom, 2.50 Bathroom, 2,115 sqft
Single Family on 0.00 Acres

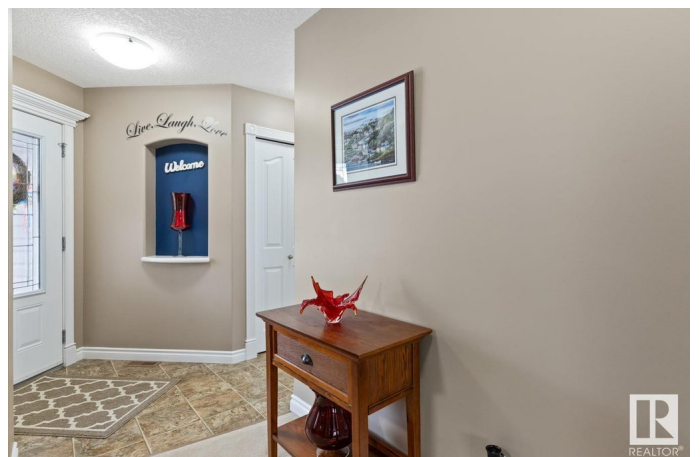
Bridgeport, Leduc, AB

2,115 sqft 2-Storey by McLean & McLean Custom Homes in prestigious Shores of Bridgeport! This stunning home offers a bright, open-concept design w/ A/C. The kitchen features an island, S/S appliances, lrg WT pantry w/ 2nd fridge, & high-quality cabinets w/ pull-out cupboards. The spacious living room is complemented by gas FP, cozy carpet & lrg windows. A main-floor office/den provides the perfect space for work or study. Upstairs, youâ€™ll find 3 spacious bdrms, incl a luxurious primary suite w/ a spa-like ensuite w/ jacuzzi tub, stand-up shower & WI closet, a generous bonus rmâ€™ideal for a media or playroomâ€™ & laundry rm w/ plenty of storage. The unfinished bsmt is full of potential, ready for your personal touch. Outside, a deck overlooks the pie-shaped lot, offering a great space for outdoor enjoyment. Dbl att. heated garage. Recent upgrades incl. new shingles (50yr warranty) & HWT (2024). Nestled on a beautiful tree-lined street, steps from scenic nature trails leading to the lake, ravine, & playgrounds.

Built in 2007

Essential Information

| | |
|--------|-----------|
| MLS® # | E4428375 |
| Price | \$559,900 |



| | |
|----------------|------------------------|
| Bedrooms | 3 |
| Bathrooms | 2.50 |
| Full Baths | 2 |
| Half Baths | 1 |
| Square Footage | 2,115 |
| Acres | 0.00 |
| Year Built | 2007 |
| Type | Single Family |
| Sub-Type | Detached Single Family |
| Style | 2 Storey |
| Status | Active |

Community Information

| | |
|-------------|------------------|
| Address | 115 Shores Drive |
| Area | Leduc |
| Subdivision | Bridgeport |
| City | Leduc |
| County | ALBERTA |
| Province | AB |
| Postal Code | T9E 0K9 |

Amenities

| | |
|-----------|--|
| Amenities | Air Conditioner, Deck, Front Porch, No Animal Home, No Smoking Home, Vinyl Windows, Vacuum System-Roughed-In |
| Parking | Double Garage Attached, Heated |

Interior

| | |
|-------------------|--|
| Interior Features | ensuite bathroom |
| Appliances | Air Conditioning-Central, Dishwasher-Built-In, Dryer, Fan-Ceiling, Garburator, Oven-Microwave, Stove-Electric, Vacuum System Attachments, Vacuum Systems, Washer, Window Coverings, See Remarks, Refrigerators-Two |
| Heating | Forced Air-1, Natural Gas |
| Fireplace | Yes |
| Fireplaces | Mantel, Tile Surround |
| Stories | 2 |
| Has Basement | Yes |
| Basement | Full, Unfinished |

Exterior

| | |
|-------------------|---|
| Exterior | Wood, Stone, Vinyl |
| Exterior Features | Fenced, Flat Site, Golf Nearby, Landscaped, Playground Nearby, Public Swimming Pool, Public Transportation, Schools, Shopping Nearby, View Lake |
| Roof | Asphalt Shingles |
| Construction | Wood, Stone, Vinyl |
| Foundation | Concrete Perimeter |

Additional Information

Date Listed April 1st, 2025

Days on Market 5

Zoning Zone 81

DATA IS DEEMED RELIABLE BUT IS NOT GUARANTEED ACCURATE BY THE REALTORS® ASSOCIATION OF EDMONTON. COPYRIGHT 2025 BY THE REALTORS® ASSOCIATION OF EDMONTON. ALL RIGHTS RESERVED. Trademarks are owned or controlled by the Canadian Real Estate Association (CREA) and identify real estate professionals who are members of CREA (REALTOR®, REALTORS®) and/or the quality of services they provide (MLS®, Multiple Listing Service®)

Listing information last updated on April 6th, 2025 at 4:47am MDT