

## \$175,000 - 143 Surrey Gardens, Edmonton

MLS® #E4427934

**\$175,000**

2 Bedroom, 1.00 Bathroom, 889 sqft

Condo / Townhouse on 0.00 Acres

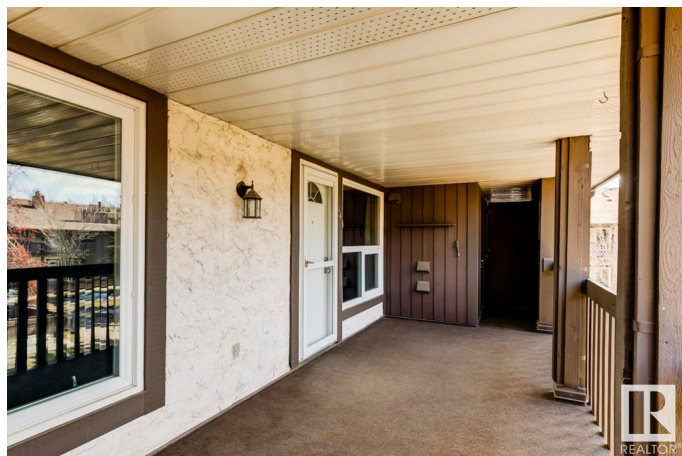
Lymburn, Edmonton, AB

Some decisions in life are toughâ€”this isnâ€™t one of them. This top-floor condo in Surrey Gardens is a fantastic opportunity, whether you're a first-time buyer or an investor. Inside, you'll find a spacious living room with a cozy wood-burning fireplace, a dedicated dining area, and a well-appointed kitchen with a generous walk-in pantry. The convenience of in-suite laundry adds to the comfort of this home. Step outside to your impressive 25 ft x 10 ft covered balcony, where you can relax and take in the quiet, peaceful courtyard view. A newer furnace and hot water tank (installed in December 2020) provide added peace of mind. Situated in a well-maintained complex, this home is just a short walk from schools, shopping, dining, transit, and all the essentials. Donâ€™t miss out on this easy choice! \*Some photos have been virtually staged\*

Built in 1977

### Essential Information

MLS® #	E4427934
Price	\$175,000
Bedrooms	2
Bathrooms	1.00
Full Baths	1
Square Footage	889



Acres	0.00
Year Built	1977
Type	Condo / Townhouse
Sub-Type	Carriage
Style	Bungalow
Status	Active

### Community Information

Address	143 Surrey Gardens
Area	Edmonton
Subdivision	Lymburn
City	Edmonton
County	ALBERTA
Province	AB
Postal Code	T5T 1Z3

### Amenities

Amenities	See Remarks
Parking	Stall

### Interior

Appliances	Dishwasher-Built-In, Dryer, Hood Fan, Refrigerator, Stove-Electric, Washer
Heating	Forced Air-1, Natural Gas
Fireplace	Yes
Fireplaces	Tile Surround
Stories	1
Has Basement	Yes
Basement	None, No Basement

### Exterior

Exterior	Wood
Exterior Features	Landscaped, Playground Nearby, Public Swimming Pool, Public Transportation, Schools, Shopping Nearby
Roof	Asphalt Shingles
Construction	Wood
Foundation	Concrete Perimeter

### Additional Information

Date Listed	March 28th, 2025
Days on Market	50
Zoning	Zone 20
Condo Fee	\$450

DATA IS DEEMED RELIABLE BUT IS NOT GUARANTEED ACCURATE BY THE REALTORS® ASSOCIATION OF EDMONTON. COPYRIGHT 2025 BY THE REALTORS® ASSOCIATION OF EDMONTON. ALL RIGHTS RESERVED. Trademarks are owned or controlled by the Canadian Real Estate Association (CREA) and identify real estate professionals who are members of CREA (REALTOR®, REALTORS®) and/or the quality of services they provide (MLS®, Multiple Listing Service®)

Listing information last updated on May 17th, 2025 at 5:17am MDT