

\$594,900 - 1410 Cyprus Way, Edmonton

MLS® #E4427681

\$594,900

3 Bedroom, 2.50 Bathroom, 2,179 sqft

Single Family on 0.00 Acres

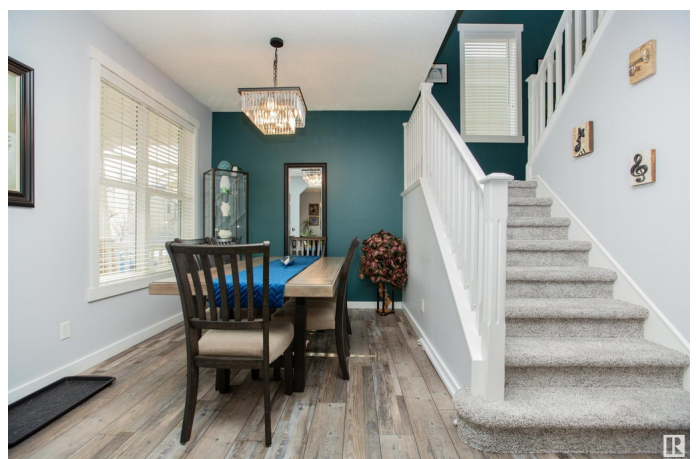
Griesbach, Edmonton, AB

Step into this refined 3-bedroom family residence in the esteemed Griesbach neighborhood, where a gas fireplace enhances the brightly illuminated open main floor living space. The kitchen, designed for both functionality and social gatherings, features stainless steel appliances, a chic wine rack, and an island with an integrated eating bar. Adjacent to the kitchen, a practical mud room doubles as a laundry area, offering direct access to the northeast-facing yard, which boasts a spacious deck and a detached double garage. The upper level unfolds into a luminous bonus room, serving as a secondary family area, adding an element of luxury to the home. The primary suite is a sanctuary of tranquility, complete with a 4-piece ensuite. Two additional bedrooms and a full bathroom ensure ample accommodation, completing this elegantly appointed level. This home masterfully combines sophisticated design with functional living, ideal for discerning families.

Built in 2005

Essential Information

MLS® #	E4427681
Price	\$594,900
Bedrooms	3
Bathrooms	2.50



Full Baths	2
Half Baths	1
Square Footage	2,179
Acres	0.00
Year Built	2005
Type	Single Family
Sub-Type	Detached Single Family
Style	2 Storey
Status	Active

Community Information

Address	1410 Cyprus Way
Area	Edmonton
Subdivision	Griesbach
City	Edmonton
County	ALBERTA
Province	AB
Postal Code	T5E 6N2

Amenities

Amenities	Detectors Smoke, Front Porch
Parking	Double Garage Detached

Interior

Interior Features	ensuite bathroom
Appliances	Dishwasher-Built-In, Dryer, Refrigerator, Stove-Electric, Washer, Window Coverings
Heating	Forced Air-1, Natural Gas
Fireplace	Yes
Fireplaces	Stone Facing
Stories	2
Has Basement	Yes
Basement	Full, Unfinished

Exterior

Exterior	Wood, Stone, Vinyl
Exterior Features	Fenced, Flat Site, Landscaped, Park/Reserve, Public Transportation, Schools, Shopping Nearby
Roof	Asphalt Shingles

Construction	Wood, Stone, Vinyl
Foundation	Concrete Perimeter

Additional Information

Date Listed	March 27th, 2025
Days on Market	33
Zoning	Zone 27

DATA IS DEEMED RELIABLE BUT IS NOT GUARANTEED ACCURATE BY THE REALTORS® ASSOCIATION OF EDMONTON. COPYRIGHT 2025 BY THE REALTORS® ASSOCIATION OF EDMONTON. ALL RIGHTS RESERVED.Trademarks are owned or controlled by the Canadian Real Estate Association (CREA) and identify real estate professionals who are members of CREA (REALTOR®, REALTORS®) and/or the quality of services they provide (MLS®, Multiple Listing Service®)

Listing information last updated on April 29th, 2025 at 12:02pm MDT