

## \$539,900 - 14 Highland Crescent, St. Albert

MLS® #E4426602

**\$539,900**

4 Bedroom, 3.50 Bathroom, 1,821 sqft

Single Family on 0.00 Acres

Heritage Lakes, St. Albert, AB

Welcome to this Westclare custom-built home, perfect for a growing or multigenerational family, located in quiet, family-friendly Heritage Lakes. This immaculate property boasts numerous upgrades, including premium ash hardwood floors, tile, and custom Westcoast shutters. The spacious main level offers a formal dining room, living room, and an open-concept kitchen featuring custom maple cabinetry, granite countertops, stainless steel appliances, and nook with patio doors leading to a private backyard with mature trees and a Northland apple tree. Relax in the family room with a gas fireplace, and enjoy the convenience of a 2 piece bath and main-floor laundry. The upper level includes a spacious primary suite with dual closets and 4 piece ensuite, along with three more bedrooms and 4-piece bath. The fully finished basement features a 3 piece bath, large rec room, ample storage, and potential for a fifth bedroom. Just steps from walking trails and parks, close to schools, and easy access to Anthony Henday.

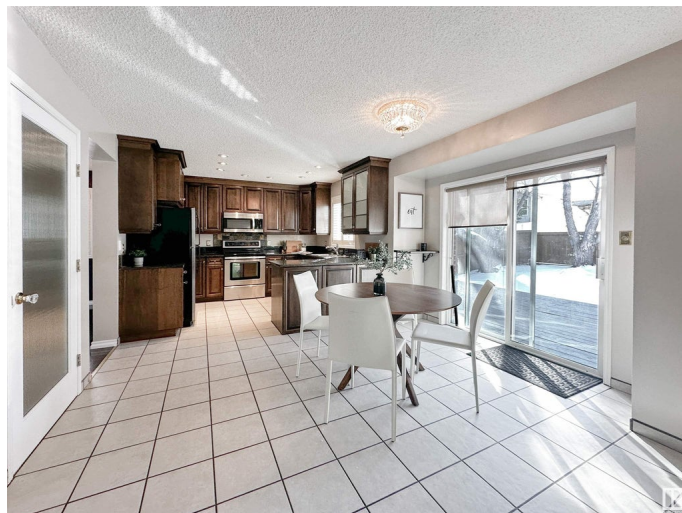
Built in 1994

### Essential Information

MLS® # E4426602

Price \$539,900

Bedrooms 4



|                |                        |
|----------------|------------------------|
| Bathrooms      | 3.50                   |
| Full Baths     | 3                      |
| Half Baths     | 1                      |
| Square Footage | 1,821                  |
| Acres          | 0.00                   |
| Year Built     | 1994                   |
| Type           | Single Family          |
| Sub-Type       | Detached Single Family |
| Style          | 2 Storey               |
| Status         | Active                 |

### Community Information

|             |                      |
|-------------|----------------------|
| Address     | 14 Highland Crescent |
| Area        | St. Albert           |
| Subdivision | Heritage Lakes       |
| City        | St. Albert           |
| County      | ALBERTA              |
| Province    | AB                   |
| Postal Code | T8N 6K1              |

### Amenities

|                |   |
|----------------|---|
| Amenities      | Deck, See Remarks, Vacuum System-Roughed-In |
| Parking Spaces | 4   |
| Parking        | Double Garage Attached                      |

### Interior

|                   |  |
|-------------------|--|
| Interior Features | ensuite bathroom   |
| Appliances        | Dishwasher-Built-In, Dryer, Garage Control, Garage Opener, Microwave Hood Fan, Refrigerator, Storage Shed, Stove-Electric, Vacuum System Attachments, Vacuum Systems, Washer, Window Coverings |
| Heating           | Forced Air-1, Natural Gas  |
| Fireplace         | Yes  |
| Fireplaces        | Mantel   |
| Stories           | 2  |
| Has Basement      | Yes  |
| Basement          | Full, Finished   |

### Exterior

|          |                    |
|----------|--------------------|
| Exterior | Wood, Brick, Vinyl |
|----------|--------------------|

|                   |   |
|-------------------|---|
| Exterior Features | Fenced, Fruit Trees/Shrubs, Landscaped, Playground Nearby, Public Transportation, Schools, Shopping Nearby, See Remarks |
| Roof              | Asphalt Shingles  |
| Construction      | Wood, Brick, Vinyl  |
| Foundation        | Concrete Perimeter  |

**Additional Information**

|                |                  |
|----------------|------------------|
| Date Listed    | March 20th, 2025 |
| Days on Market | 31               |
| Zoning         | Zone 24          |

DATA IS DEEMED RELIABLE BUT IS NOT GUARANTEED ACCURATE BY THE REALTORS® ASSOCIATION OF EDMONTON. COPYRIGHT 2025 BY THE REALTORS® ASSOCIATION OF EDMONTON. ALL RIGHTS RESERVED.Trademarks are owned or controlled by the Canadian Real Estate Association (CREA) and identify real estate professionals who are members of CREA (REALTOR®, REALTORS®) and/or the quality of services they provide (MLS®, Multiple Listing Service®)

Listing information last updated on April 20th, 2025 at 4:02pm MDT