

# \$295,000 - 401 501 Palisades Way, Sherwood Park

MLS® #E4424107

**\$295,000**

2 Bedroom, 2.00 Bathroom, 1,032 sqft  
Condo / Townhouse on 0.00 Acres

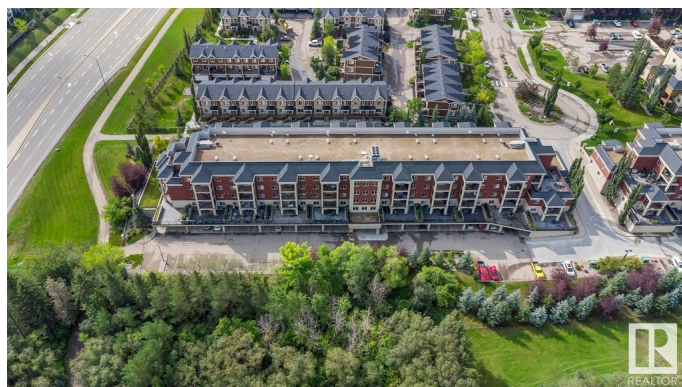
Centennial Village, Sherwood Park, AB

BEAUTIFULLY UPDATED in Palisades on the Ravine featuring AC, 2 bedrooms, 2 baths, UNDERGROUND, HEATED PARKING & gorgeous VIEWS! You will LOVE the refreshed kitchen with white cabinets, open shelving, stainless steel appliances, walk in pantry & peninsula island that over looks the dining area & living room with laminate flooring & access to the patio. The new flooring is continued through to the primary suite with walk through closet & 3pc ensuite. 2nd bedroom is also generous in size. 4pc bath, in-suite laundry & den compliment the functional layout. You will LOVE the amenities including exercise room on main level & social room with wet bar & pool table in the 500 building. RELAX on the patio that over looks Centennial Park. Nothing to do here but move in and enjoy condo living at it's finest with condo fees that include HEAT & WATER in this PET FRIENDLY, 18+ building, that is steps away from parks, trails, shopping & Millennium Place.

Built in 2008

## Essential Information

MLS® #	E4424107
Price	\$295,000
Bedrooms	2



Bathrooms	2.00
Full Baths	2
Square Footage	1,032
Acres	0.00
Year Built	2008
Type	Condo / Townhouse
Sub-Type	Lowrise Apartment
Style	Single Level Apartment
Status	Active

### **Community Information**

Address	401 501 Palisades Way
Area	Sherwood Park
Subdivision	Centennial Village
City	Sherwood Park
County	ALBERTA
Province	AB
Postal Code	T8H 0H8

### **Amenities**

Amenities	Air Conditioner, Ceiling 9 ft., Exercise Room, Patio, See Remarks, Natural Gas BBQ Hookup
Parking	Heated, Underground

### **Interior**

Interior Features	ensuite bathroom
Appliances	Dishwasher-Built-In, Dryer, Microwave Hood Fan, Refrigerator, Stove-Electric, Washer
Heating	Fan Coil, Natural Gas
# of Stories	4
Stories	1
Has Basement	Yes
Basement	None, No Basement

### **Exterior**

Exterior	Concrete, Brick, Stucco
Exterior Features	Landscaped, Playground Nearby, Private Setting, Public Transportation, Schools, Shopping Nearby, See Remarks
Roof	Tar & Gravel

Construction	Concrete, Brick, Stucco
Foundation	Concrete Perimeter

### **Additional Information**

Date Listed	March 5th, 2025
Days on Market	31
Zoning	Zone 25
Condo Fee	\$612

DATA IS DEEMED RELIABLE BUT IS NOT GUARANTEED ACCURATE BY THE REALTORS® ASSOCIATION OF EDMONTON. COPYRIGHT 2025 BY THE REALTORS® ASSOCIATION OF EDMONTON. ALL RIGHTS RESERVED. Trademarks are owned or controlled by the Canadian Real Estate Association (CREA) and identify real estate professionals who are members of CREA (REALTOR®, REALTORS®) and/or the quality of services they provide (MLS®, Multiple Listing Service®)

Listing information last updated on April 5th, 2025 at 5:17pm MDT