

Courtesy Of Jeff D Jackson Of Bode

# \$685,157 - 19015 20 Avenue, Edmonton

MLS® #E4419125

## \$685,157

3 Bedroom, 2.50 Bathroom, 2,085 sqft  
Single Family on 0.00 Acres

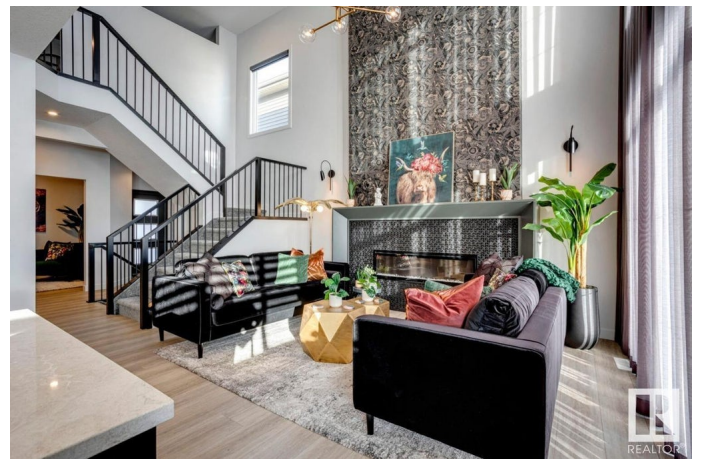
River's Edge, Edmonton, AB

Discover this stunning farmhouse-style home featuring an open-to-below great room with large windows that flood the space with natural light. The main floor includes a convenient bedroom, a 3-piece bathroom with a standing shower, and a mudroom. The modern kitchen boasts quartz counters, cabinets to the ceiling, a walkthrough pantry, undermount sinks, and an electric fireplace in the living area. MDF shelving is thoughtfully placed throughout, adding functionality and style. Enjoy the spacious 21x22 double garage, textured ceilings, and a private side entrance. This beautifully designed home is the perfect blend of elegance and practicality! Photos are representative.

Built in 2025

### Essential Information

|                |           |
|----------------|-----------|
| MLS® #         | E4419125  |
| Price          | \$685,157 |
| Bedrooms       | 3         |
| Bathrooms      | 2.50      |
| Full Baths     | 2         |
| Half Baths     | 1         |
| Square Footage | 2,085     |
| Acres          | 0.00      |
| Year Built     | 2025      |



|          |                        |
|----------|------------------------|
| Type     | Single Family          |
| Sub-Type | Detached Single Family |
| Style    | 2 Storey               |
| Status   | Active                 |

### **Community Information**

|             |                 |
|-------------|-----------------|
| Address     | 19015 20 Avenue |
| Area        | Edmonton        |
| Subdivision | River's Edge    |
| City        | Edmonton        |
| County      | ALBERTA         |
| Province    | AB              |
| Postal Code | T6M 3A7         |

### **Amenities**

|                |                                 |
|----------------|---------------------------------|
| Amenities      | No Animal Home, No Smoking Home |
| Parking Spaces | 4                               |
| Parking        | Double Garage Attached          |

### **Interior**

|                   |                              |
|-------------------|------------------------------|
| Interior Features | ensuite bathroom             |
| Appliances        | Hood Fan, Microwave Hood Fan |
| Heating           | Forced Air-1, Natural Gas    |
| Fireplace         | Yes                          |
| Fireplaces        | Insert                       |
| Stories           | 2                            |
| Has Basement      | Yes                          |
| Basement          | Full, Unfinished             |

### **Exterior**

|                   |                                      |
|-------------------|--------------------------------------|
| Exterior          | Wood, Brick, Vinyl                   |
| Exterior Features | Cul-De-Sac, Schools, Shopping Nearby |
| Roof              | Asphalt Shingles                     |
| Construction      | Wood, Brick, Vinyl                   |
| Foundation        | Concrete Perimeter                   |

### **Additional Information**

|                |                    |
|----------------|--------------------|
| Date Listed    | January 24th, 2025 |
| Days on Market | 91                 |

Zoning

Zone 57



DATA IS DEEMED RELIABLE BUT IS NOT GUARANTEED ACCURATE BY THE REALTORS® ASSOCIATION OF EDMONTON. COPYRIGHT 2025 BY THE REALTORS® ASSOCIATION OF EDMONTON. ALL RIGHTS RESERVED. Trademarks are owned or controlled by the Canadian Real Estate Association (CREA) and identify real estate professionals who are members of CREA (REALTOR®, REALTORS®) and/or the quality of services they provide (MLS®, Multiple Listing Service®)

Listing information last updated on April 25th, 2025 at 8:17pm MDT