

Courtesy Of Gerard Y Hagan Of Sterling Real Estate

\$122,600 - 302 6204 180 Street, Edmonton

MLS® #E4418097

\$122,600

1 Bedroom, 1.00 Bathroom, 690 sqft
Condo / Townhouse on 0.00 Acres

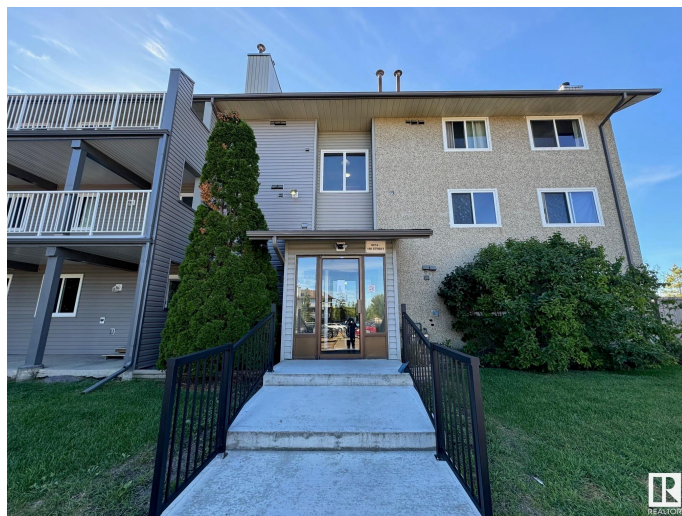
Ormsby Place, Edmonton, AB

Top floor corner unit with all the vibes! This sunny, spacious gem is your cozy retreat with a wood-burning fireplace perfect for chilly nights. The bedroom boasts a cheater door to the bathroom through a walk-in closet (fancy, right?). Whip up meals in a kitchen with stunning counters, all while gazing out big, beautiful windows. Youâ€™ve got your own furnace and hot water tankâ€”so youâ€™re the boss of your bills. Parkside Grandeâ€™s got your back (literally)â€”it backs onto lush grass fields, walking paths, and playgrounds. Stroll, jog, or just soak up the chill. Plus, you're minutes from Henday Freeway and West Edmonton Mallâ€”shopping spree, anyone?

Built in 1980

Essential Information

MLS® #	E4418097
Price	\$122,600
Bedrooms	1
Bathrooms	1.00
Full Baths	1
Square Footage	690
Acres	0.00
Year Built	1980
Type	Condo / Townhouse
Sub-Type	Lowrise Apartment



Style Single Level Apartment
Status Active

Community Information

Address 302 6204 180 Street
Area Edmonton
Subdivision Ormsby Place
City Edmonton
County ALBERTA
Province AB
Postal Code T5T 3J9

Amenities

Amenities On Street Parking, Closet Organizers, Detectors Smoke, Intercom, No Animal Home, No Smoking Home, Parking-Visitor
Parking Stall

Interior

Appliances Dishwasher-Built-In, Refrigerator, Stove-Electric
Heating Forced Air-1, Natural Gas
Fireplaces Brick Facing, Mantel
of Stories 3
Stories 3
Has Basement Yes
Basement None, No Basement

Exterior

Exterior Wood, Vinyl
Exterior Features Backs Onto Park/Trees, Fenced, Golf Nearby, Playground Nearby, Public Transportation, Schools, Shopping Nearby, Ski Hill Nearby
Roof Asphalt Shingles
Construction Wood, Vinyl
Foundation Concrete Perimeter

Additional Information

Date Listed January 15th, 2025
Days on Market 98
Zoning Zone 20
Condo Fee \$324

DATA IS DEEMED RELIABLE BUT IS NOT GUARANTEED ACCURATE BY THE REALTORS® ASSOCIATION OF EDMONTON. COPYRIGHT 2025 BY THE REALTORS® ASSOCIATION OF EDMONTON. ALL RIGHTS RESERVED. Trademarks are owned or controlled by the Canadian Real Estate Association (CREA) and identify real estate professionals who are members of CREA (REALTOR®, REALTORS®) and/or the quality of services they provide (MLS®, Multiple Listing Service®)

Listing information last updated on April 23rd, 2025 at 2:47am MDT