

Courtesy Of Jaspal Chahal Of MaxWell Polaris

\$339,900 - 7 15151 43 Street, Edmonton

MLS® #E4409469

\$339,900

3 Bedroom, 3.00 Bathroom, 1,369 sqft
Condo / Townhouse on 0.00 Acres

Miller, Edmonton, AB

Welcome to the FABULOUS WALKOUT HALF DUPLEX in the Desired community of Miller. With over 1369 sq.ft. of exquisite living space - this Superior upgraded home will be sure to impress. The bright & spacious living room is anchored by a gas fireplace. The upper level boasts a lovely master bedroom with a luxury 4 piece en-suite, 2 additional good sized bedrooms & a 4 piece bathroom. This exceptional home is good for First-time home buyer. You are going to buy this excellent property in very low condo fee enjoying your own house. The exterior with a single attached garage & lovely deck! This house is located at very convenient location near to all amenities as schools, Shopping centres, Parks and public transport facility. Also it is located on a walking distance from Clareview LRT Station. Ideally located wiith quick acess to the Anthony Henday - this home is amazing!!! Recently Beautifully Painted & Carpet cleaned, Brand New Door Handles replaced as well!!

Built in 2008

Essential Information

MLS® #	E4409469
Price	\$339,900
Bedrooms	3
Bathrooms	3.00



Full Baths	2
Half Baths	2
Square Footage	1,369
Acres	0.00
Year Built	2008
Type	Condo / Townhouse
Sub-Type	Half Duplex
Style	2 Storey
Status	Active

Community Information

Address	7 15151 43 Street
Area	Edmonton
Subdivision	Miller
City	Edmonton
County	ALBERTA
Province	AB
Postal Code	T5Y 0L3

Amenities

Amenities	Ceiling 9 ft., Deck
Parking	Single Garage Attached

Interior

Interior Features	ensuite bathroom
Appliances	Dishwasher-Built-In, Dryer, Microwave Hood Fan, Refrigerator, Washer
Heating	Forced Air-1, Natural Gas
Fireplace	Yes
Fireplaces	Corner, Glass Door, Tile Surround
Stories	3
Has Basement	Yes
Basement	Full, Finished

Exterior

Exterior	Wood, Vinyl
Exterior Features	Backs Onto Park/Trees, Landscaped, No Through Road, Playground Nearby, Public Transportation, Schools, Shopping Nearby
Roof	Asphalt Shingles
Construction	Wood, Vinyl

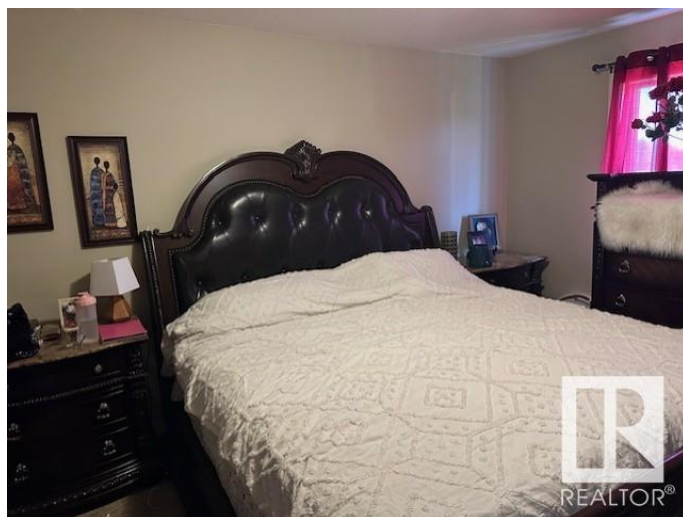
Foundation Concrete Perimeter

School Information

Elementary Mcleod School
Middle Londonderry School
High M. E. LaZarte School

Additional Information

Date Listed October 6th, 2024
Days on Market 198
Zoning Zone 02
Condo Fee \$267



DATA IS DEEMED RELIABLE BUT IS NOT GUARANTEED ACCURATE BY THE REALTORS® ASSOCIATION OF EDMONTON. COPYRIGHT 2025 BY THE REALTORS® ASSOCIATION OF EDMONTON. ALL RIGHTS RESERVED. Trademarks are owned or controlled by the Canadian Real Estate Association (CREA) and identify real estate professionals who are members of CREA (REALTOR®, REALTORS®) and/or the quality of services they provide (MLS®, Multiple Listing Service®)

Listing information last updated on April 22nd, 2025 at 1:32pm MDT